



VIEWMASTER TECHNICAL SPECIFICATION

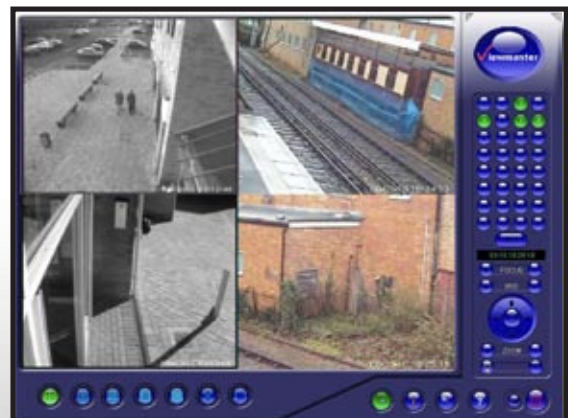
Recording

Recording rate	200 images per second record rate
Variable record rate	Variable frame rates from 25 frames fps to 7.5 fps per camera
Record format	640x480, 320x240
Compression method	H.264 with variable compression level
Typical capacities	320 gig hard drive provides 4weeks back history using movement sensing software
Video inputs	8 off per camera card expandable to 24 off with 3 off camera cards
Video Signal	1Volt peak to peak PAL format
Computer interface	PCI standard single slot per 8 cameras
Audio	Single audio channel

Viewing

Viewing

Real time monitoring of all images in single, quad, 8 way, 16 way and 32 way screens. Double click image to view full screen.





Playback

Search

By calendar time and date and scroll bar to view movement

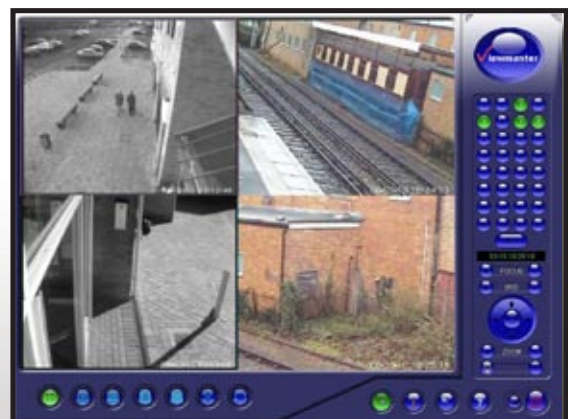
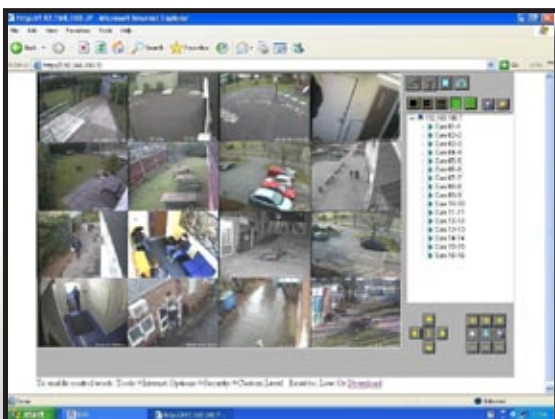
Playback

Full screen, single or multi-camera view with variable speed and single step controls.
Record and playback simultaneously



Networking and Remote viewing

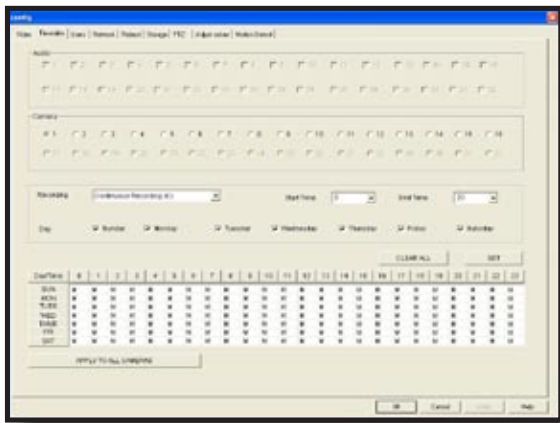
Remote viewing of live images and incident files either via downloadable Active X control, from within Internet Explorer, or alternatively using separate client software installed on most Windows XP or Windows 2000 based computers.





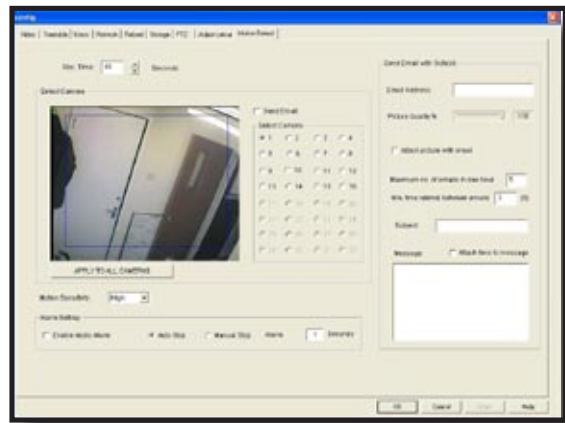
Scheduling

Schedule recording for each camera according to hourly and daily settings.



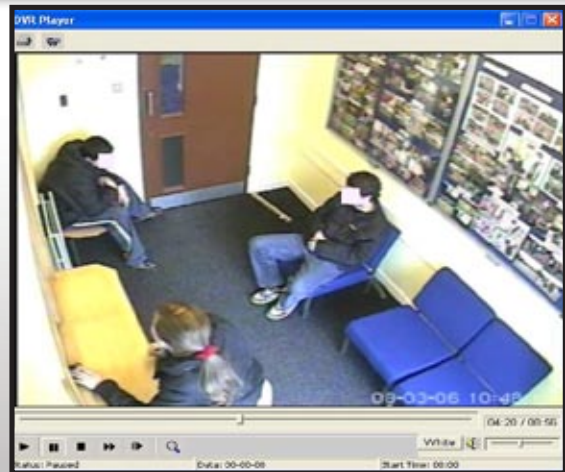
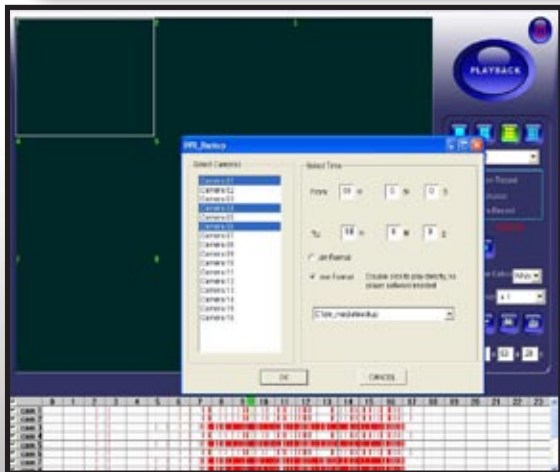
Motion detection

Set the movement sensitivity level and region of interest for each camera to exclude unwanted activation, for example from passing traffic.



Incident backup/export

Snap shot	Save to .bmp file
Print frame	Supports standard Windows printers
Backup	Backup single or multiple cameras using simple "From - To" on screen controls. Incidents may be saved in either .EXE or .DVR format. The .EXE format contains the player software for easy remote viewing. Simply copy the file to a DVD or memory stick and then double-click to replay from most Windows 2000 or XP computers.



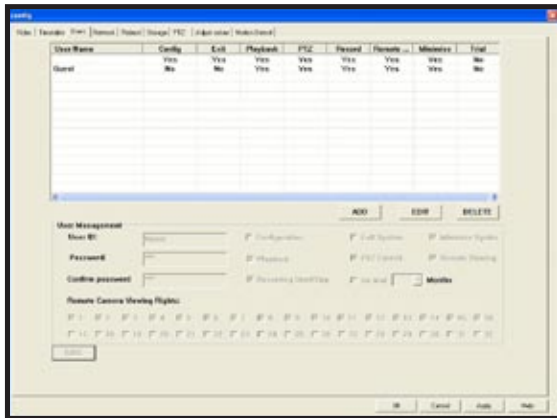
Backup multiple cameras "From - To"

Player software: Embedded in backup file.



Password protection

Set the user and supervisor passwords with up to seven different levels of access. Remote access is protected by user name and password.



Watermarking: time and date stamp

Time and date stamp the image with the precise incident time for presentation of evidence and preparation of the audit trail.



Computer specifications

Operating system	Windows XP professional
Computer	Pentium 4 or dual core processor with Intel based motherboard preferred
Bus Interface	PCI Single PCI slot per 8 channels of video
Hard drive	SATA 160 or 320 gig drive recommended
Memory	At least 256M DRAM
SVGA	Direct draw 9 and above capability with at least 32MRAM, preferred ATI radeon 7000 series and above Nvidia Geforce series and above.
Interface	USB 2.0 support
System Build	Rackmount, PC tower or "Cube" format

